

MONTHLY MEMBERSHIP PROGRESS REPORT

LOCATION KANSAS

District 17 N

Results as of: 4/30/2021

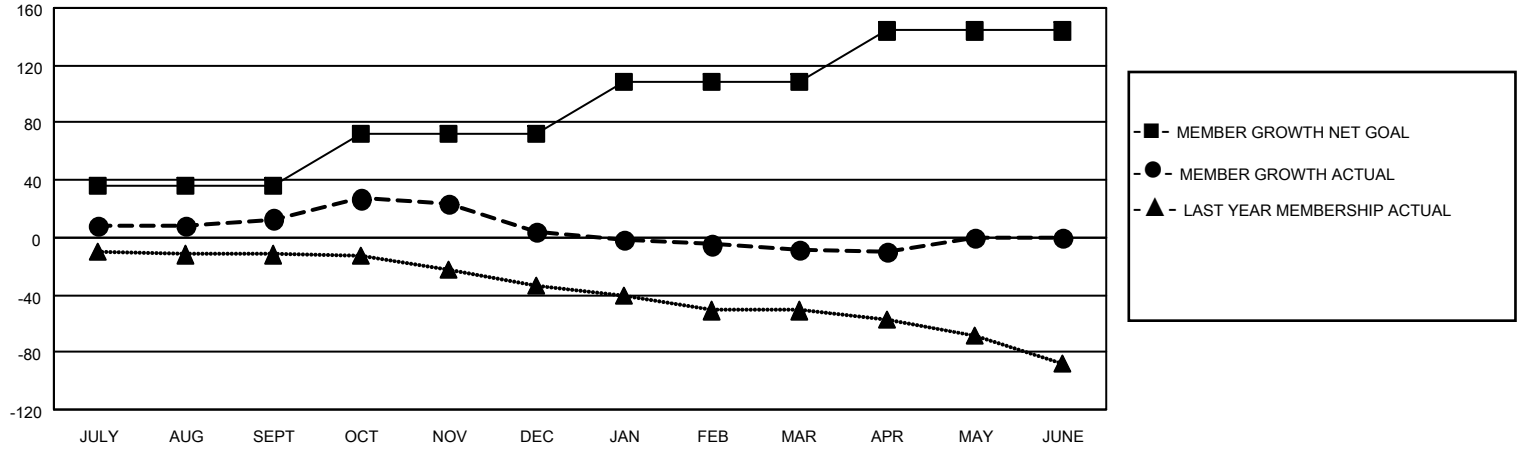
Clubs			
RESULTS FOR 2020-2021			
QUARTER	NEW CLUB GOAL	NEW CLUBS	DROPPED CLUBS
JULY/AUG/SEPT	0	0	0
OCT/NOV/DEC	0	0	0
JAN/FEB/MAR	0	0	0
APR/MAY/JUNE	1	0	0

Members			
RESULTS FOR 2020-2021			
QUARTER	MEMBER GROWTH NET GOAL	MEMBER GROWTH ACTUAL	DROPPED MEMBERS ACTUAL (including transfers)
JULY/AUG/SEPT	36	42	26
OCT/NOV/DEC	36	39	46
JAN/FEB/MAR	36	13	24
APR/MAY/JUNE	36	6	8

GOALS AND ACTUAL NEW CLUBS CUMULATIVE



GOALS AND ACTUAL MEMBERS CUMULATIVE



DROPPED CLUBS: 0	33 CLUBS OF 72 ADDED 1 OR MORE NEW MEMBERS	<u>GENDER DISTRIBUTION</u>
<u>DROPPED MEMBERS</u>		MALE 1,025 (71.13%)
DECEASED 21		FEMALE 416 (28.87%)
CLUB CANCELLED 0	CLICK HERE FOR CUMULATIVE MEMBERSHIP DATA	TOTAL FAMILY UNIT MEMBERS 274
OTHER 83		FAMILY MEMBERS PAYING HALF DUES 141
TOTAL 104		